



The Enlighted Where application is a global enterprise-wide real-time location system. The Where application shows live and replayed movement of tags in buildings.

### The Enlighted IoT Platform Advantage

- High density sensor layout in the building yields reliable location information
- Sensors powered via lighting fixtures
- Network infrastructure paid for by energy savings

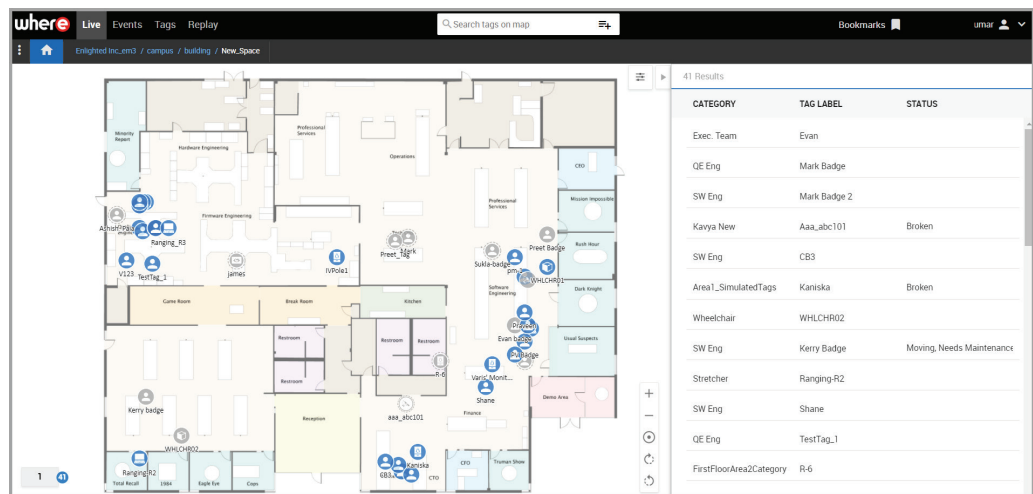


- Supported web browsers: Chrome 71, or IE 11
- Supported mobile apps: iOS 12.0, or Android 9

### The Enlighted Where

The Enlighted Where application reliably tracks assets and locates people in real-time in a building or across buildings in an enterprise. The Where application component integrated into the Enlighted IoT platform provides a unified solution leveraging data from the Enlighted sensors.

Enlighted tags are attached physically to equipment or worn as staff badges. Using the tag location data, the Where application provides a live view of current tag locations within a facility by floor and category, allowing for precise search and real-time alerts. The tag location data may be replayed on demand.



Real-time motion or replayed motion of tagged items on the map.

### The Enlighted IoT Platform

Enlighted brings the Internet of Things to buildings by deploying cloud-connected sensors, advanced networking, and big data analytics applications. The infrastructure pays for itself through energy savings of up to 90%. Enlighted’s dense sensor network of one sensor per light fixture and ceiling-mounted positioning captures the most robust data in the industry. This data powers Enlighted’s solutions for building space management, real-time location services, occupancy-based HVAC, lighting control, and more.



# Accurate Indoor Location Mapping



## How Enlighted Where Works

Each Enlighted tag broadcasts Bluetooth messages, which are received by the Enlighted sensors embedded in the fixtures. Using the tag location data captured by the sensors mounted in the ceiling and other information from the tag, the Where application tracks and records each tag's location as it moves through the building using advanced algorithms.

Real-time alerts can be configured to notify staff when an asset enters or leaves geofence areas, which are virtual boundaries around a physical area marked in the map. Alerts can also be generated based on category counts and duration of stay in the geofence area. Notifications can be sent directly to mobile devices or via email to help users stay up to the minute on the asset activity in the building.

The application also stores location data by date and time, which can be replayed on-demand on the map with several options for playback. The tag location data is also accessible via APIs, which can be used to drive operational insights and analytics.

## Features

- Precise live asset location and movement
- Configurable asset categories and tags statuses
- Powerful search across multiple facilities
- Real-time alerts for fast response to critical events
- Replay on-demand movement of tagged items
- Advanced dynamic filtering with custom tags statuses
- Easily configurable geofence areas and alerts
- Accurate floor maps for facilities

## Data Privacy

The Enlighted Where application collects and stores occupancy data captured by the Enlighted sensors and tags. For information specific to the sensor or tag, refer to the corresponding specification sheet.

The Where application stores the organization name, occupancy data, floor maps, real-time location of tags within the proximity of the sensors, and organizational facility information for providing services. The application tracks user login, logout events, user IP address, and application pages accessed by the users.

## The Enlighted Where Advantage

- Spend less time searching for equipment and people
- Reduce loss of high-value assets
- Reduce unnecessary equipment purchases
- Optimize processes using location history
- Reduce capital expenditure
- Increase staff productivity

## Product Codes

WHR-LSP: License Subscription Pricing